



CLIP top BLUMOTION 110°, special

Technical data sheet

CLIP top BLUMOTION

110° special hinge



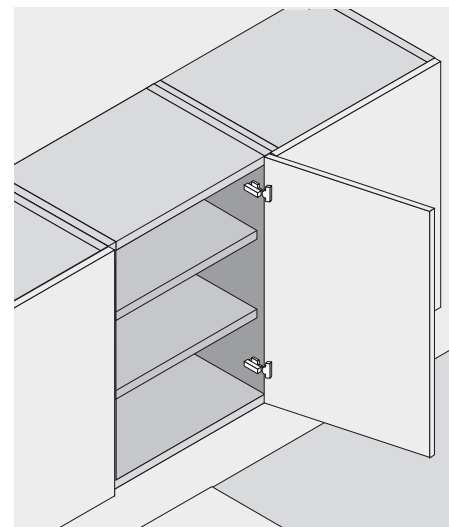
Product



Description

- All metal hinge, nickel plated
- Hinge with large overlay for thick cabinet sides
- 110° opening angle
- With **integrated BLUMOTION**
- With **BLUMOTION deactivation**
- with convenient spiral-tech depth adjustment
- Compatible with existing mounting plates
- With closing mechanism (spring)
- Tool-free door to cabinet assembly and removal
- 3-dimensional adjustment (with relevant mounting plate)
- With **INSERTA** tool-free boss assembly

Application



Order specification

Overlay application		
	Boss INSERTA	Part No.
Steel boss with spring		73B3590

	Boss Screw-on	
Steel boss with spring		73B3550

	Boss Knock-in		MZM.0040
Steel boss with spring			73B3580

	Boss EXPANDO	
Steel boss with spring		73B358E

Cover caps		
	Steel	Nickel plated
Plain		70.1503
Stamped	Blum	70.1503.BP

Accessories

	Chipboard screws for hinge boss fixing	
3.5 x 15 mm		609.1500
3.5 x 17 mm		609.1700

	Boss cover cap for screw-on/knock-in boss	
Steel	Nickel plated	70T3504

	Opening angle stop 86°	
Nylon		70T3553

CLIP top BLUMOTION

110° special hinge

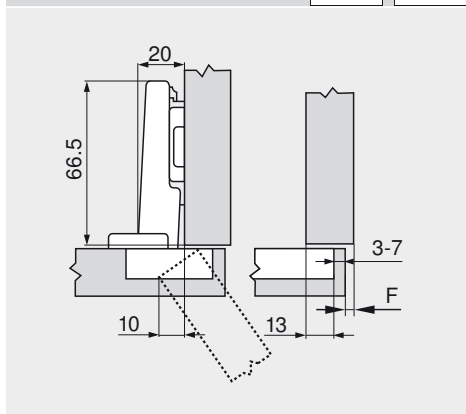
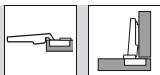


Planning

Hinge dimensions and gap calculation based on factory setting (mounting plate spacing = 0 mm)

Hinge and door protrusion at full opening angle

Overlay application




F Gap

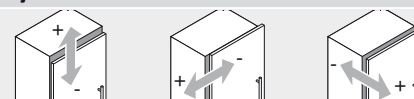
Drilling distance

Front overlay		7	8	9	10	11	12	13	14	15	16	17	18	19	20
0											3	4	5	6	7
3								3	4	5	6	7			
6					3	4	5	6	7						
9		3	4	5	6	7									
Mounting plate															

Minimum gap for doors with radiused edges (R = 1 mm) based on factory setting

 <p>Drilling distance</p>	Door thickness																
	16	18	19	20	21	22	23	24	25	26	28	30	32				
	3	0.5	0.8	1.0	1.2	1.5	1.8	2.2	2.7	3.5	4.3	A trial application is recommended					
	4	0.5	0.8	1.0	1.2	1.4	1.7	2.0	2.5	3.1	3.8						
	5	0.5	0.8	0.9	1.2	1.4	1.7	2.0	2.4	2.9	3.4						
	6	0.5	0.8	0.9	1.2	1.3	1.6	1.9	2.3	2.7	3.2						
	7	0.5	0.8	0.9	1.1	1.3	1.6	1.9	2.2	2.6	3.0						
	Additional at + 2 mm side adjustment																
	+0.2	+0.4	+0.4	+0.5	+0.5	+0.5	+0.5	+0.5	+0.5	+0.5	+0.5						

Adjustments

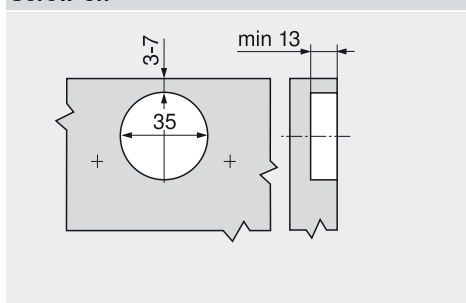


max. ± 3.0 mm
see mounting plates

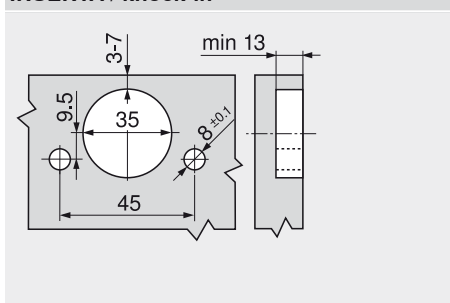
± 2.0 mm

+ 3.0 mm
- 2.0 mm

Screw-on



INSERTA / knock-in



Hinge boss dimensions

